

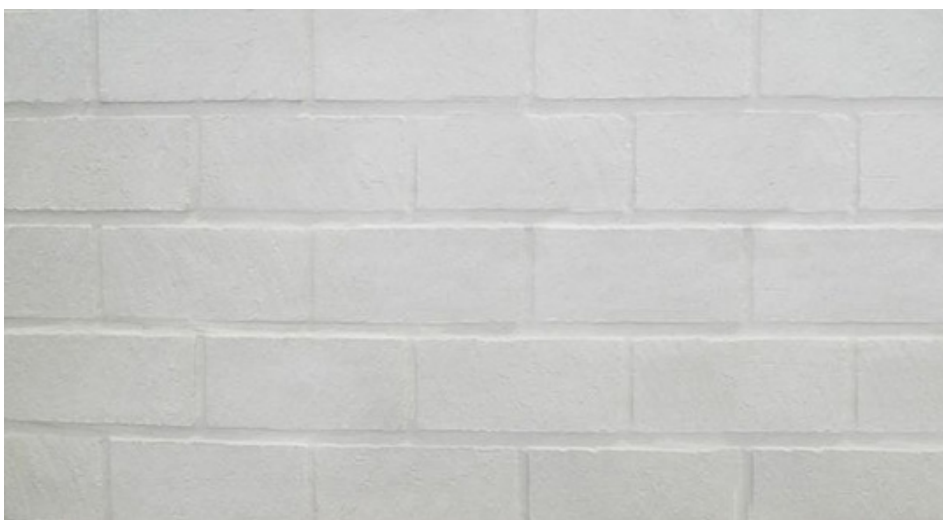


CUT TO FIT REFRACTORY PANELS

ALL PANELS MEET UL 127 & ASTM C133 REQUIRMENTS AND ARE CERTIFIED BY
OMNI TEST LABORATORIES

Effective May 16, 2022

| ITEM # | DESCRIPTION | MSRP |
|--------|--|-------------|
| 2433LB | 24" x 33" Large Brick Replacement Panel 1" to 1-1/8" thick | \$159.99 Ea |



| ITEM # | DESCRIPTION | MSRP |
|--------|--|-------------|
| 2433SB | 24" x 33" Small Brick Replacement Panel 1" to 1-1/8" thick | \$159.99 Ea |



SHIPPING / WILL CALL:

Panels may only be shipped if ordered in quantities of 20***
Will Call panels can be of any quantity

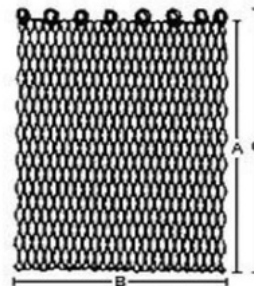
CURING: ALL PANELS MUST BE CURED BY BURNING 5 SMALL FIRES (SAUCER SIZE) FOR
APPROXIMATELY THIRTY (30) MINUTES.



JUSTESEN FIREPLACE RESPLACEMENT WIRE MESH SCREENS

Effective Sept 9, 2020

| ITEM # | DESCRIPTION | MSRP |
|--------|-------------------------------|---------|
| 2416SM | TWO 24" W x 16" L MESH SCREEN | \$59.99 |
| 2417SM | TWO 24" W x 17" L MESH SCREEN | \$59.99 |
| 2418SM | TWO 24" W x 18 L MESH SCREEN | \$59.99 |
| 2419SM | TWO 24" W x 19 L MESH SCREEN | \$59.99 |
| 2420SM | TWO 24" W x 20 L MESH SCREEN | \$59.99 |
| 2421SM | TWO 24" W x 21 L MESH SCREEN | \$59.99 |
| 2422SM | TWO 24" W x 22 L MESH SCREEN | \$59.99 |
| 2423SM | TWO 24" W x 23 L MESH SCREEN | \$59.99 |
| 2424SM | TWO 24" W x 24 L MESH SCREEN | \$59.99 |
| 2425SM | TWO 24" W x 25 L MESH SCREEN | \$59.99 |
| 2426SM | TWO 24" W x 26 L MESH SCREEN | \$59.99 |
| 2427SM | TWO 24" W x 27 L MESH SCREEN | \$59.99 |
| 2428SM | TWO 24" W x 28 L MESH SCREEN | \$69.99 |
| 2429SM | TWO 24" W x 29 L MESH SCREEN | \$69.99 |
| 2430SM | TWO 24" W x 30 L MESH SCREEN | \$69.99 |
| 2436SM | TWO 24" W x 36 L MESH SCREEN | \$79.99 |



THE REPLACEMENT PACKAGE CONTAINS TWO (2) 24-INCH WIDE WOVEN WIRE MESH PANELS THAT ARE FINISHED IN A HIGH TEMP BLACK. THEY UNCLUDE ATTACHED SCREEN PULLS & RINGS